

New GANZ Crane

15/12 t x 17/21 m Level-Luffing Slewing
Portal Dockside Crane



GANZ

for Port Said Shipyard (Egypt)
2017

GANZ DANUBIUS
TRADING Co. Ltd.

A world map with a light blue background and a darker blue overlay on the continents. The text is overlaid on the map.

Contents

Technical data

3D design

Manufacturing of steel structure parts

Manufacturing of machinery parts

Pre-assembly of steel construction and machinery parts

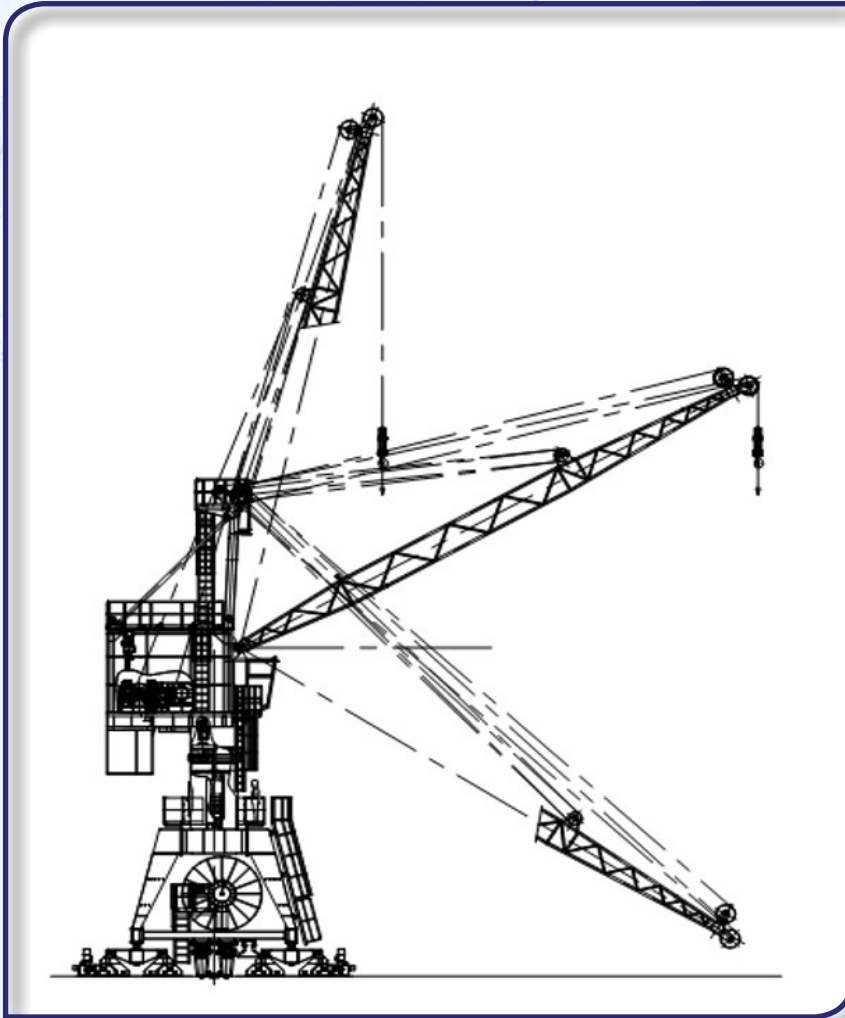
Delivery of machinery and steel construction parts

Erecting the crane

Test and trials

15/12 t x 17/21 m Level-Luffing Slewing Portal Dockside Crane

Technical data



- Working with Hook
- Load capacity 15 t 12 t
- Working radius max./min. 17/6,5 m 21/6,5 m
- Lifting height 21 m
- Lowering below rail 17 m
- Portal Span 3,9 m
- Drive units
 - Hoisting gear up to 15 t 0...20 m/min
 - Hoisting gear up to 7,5 t 0...20 m/min
 - Luffing gear 0...8 m/min
 - Slewing gear 0...1,5 m/min
 - Travelling gear 0...32 m/min

15/12 t x 17/21 m Level-Luffing Slewing Portal Dockside Crane

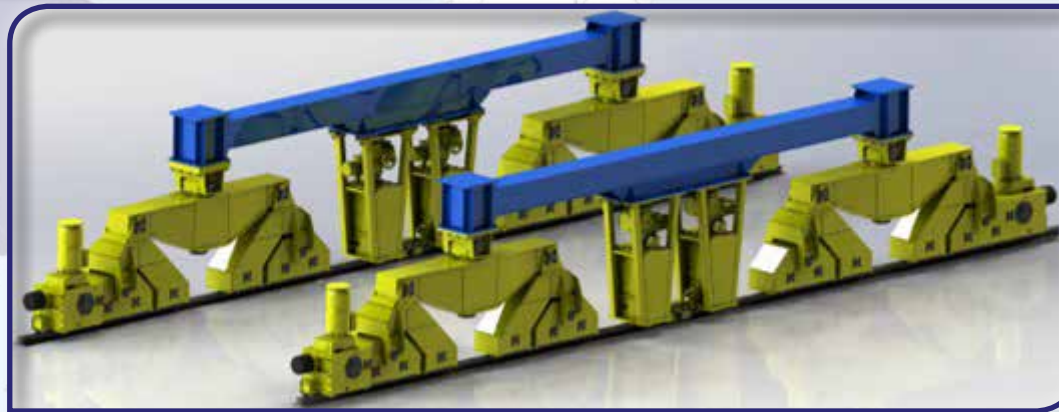
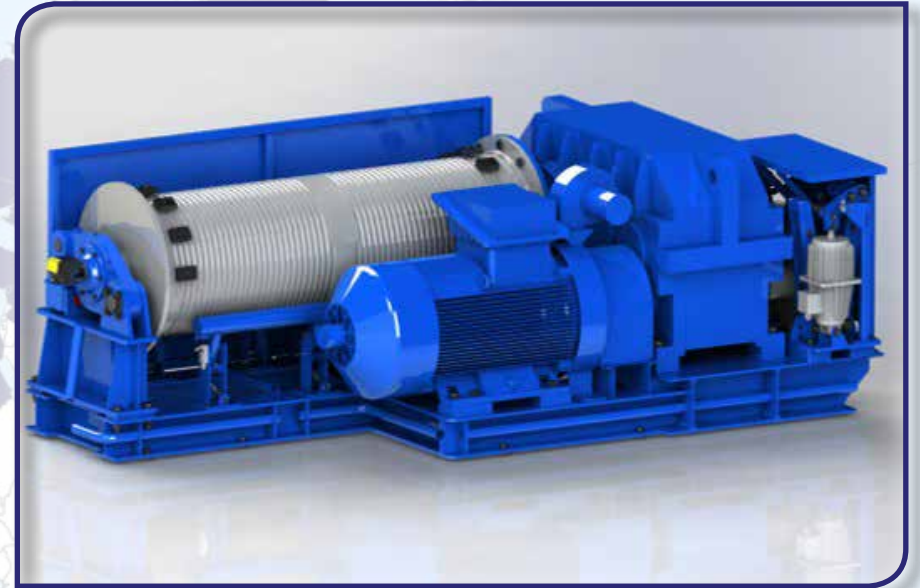
3D design



GANZ DANUBIUS
TRADING Co. Ltd.

15/12 t x 17/21 m Level-Luffing Slewing Portal Dockside Crane

3D design



GANZ DANUBIUS
TRADING Co. Ltd.

15/12 t x 17/21 m Level-Luffing Slewing Portal Dockside Crane

Manufacturing of steel structure parts



15/12 t x 17/21 m Level-Luffing Slewing Portal Dockside Crane

Manufacturing of steel structure parts



15/12 t x 17/21 m Level-Luffing Slewing Portal Dockside Crane

Manufacturing of steel structure parts



15/12 t x 17/21 m Level-Luffing Slewing Portal Dockside Crane

Manufacturing of steel structure parts



15/12 t x 17/21 m Level-Luffing Slewing Portal Dockside Crane

Manufacturing of machinery parts



15/12 t x 17/21 m Level-Luffing Slewing Portal Dockside Crane

Manufacturing of machinery parts



15/12 t x 17/21 m Level-Luffing Slewing Portal Dockside Crane

Manufacturing of machinery parts



15/12 t x 17/21 m Level-Luffing Slewing Portal Dockside Crane

Manufacturing of machinery parts



15/12 t x 17/21 m Level-Luffing Slewing Portal Dockside Crane

Manufacturing of machinery parts



15/12 t x 17/21 m Level-Luffing Slewing Portal Dockside Crane

Manufacturing of machinery parts



15/12 t x 17/21 m Level-Luffing Slewing Portal Dockside Crane

Manufacturing of machinery parts



15/12 t x 17/21 m Level-Luffing Slewing Portal Dockside Crane

Pre-assembly of steel construction and machinery parts



15/12 t x 17/21 m Level-Luffing Slewing Portal Dockside Crane

Pre-assembly of steel construction and machinery parts



15/12 t x 17/21 m Level-Luffing Slewing Portal Dockside Crane

Pre-assembly of steel construction and machinery parts



15/12 t x 17/21 m Level-Luffing Slewing Portal Dockside Crane

Pre-assembly of steel construction and machinery parts



15/12 t x 17/21 m Level-Luffing Slewing Portal Dockside Crane

Delivery of machinery and steel construction parts



15/12 t x 17/21 m Level-Luffing Slewing Portal Dockside Crane

Delivery of machinery and steel construction parts



15/12 t x 17/21 m Level-Luffing Slewing Portal Dockside Crane

Erecting the crane



15/12 t x 17/21 m Level-Luffing Slewing Portal Dockside Crane

Erecting the crane



15/12 t x 17/21 m Level-Luffing Slewing Portal Dockside Crane

Erecting the crane



15/12 t x 17/21 m Level-Luffing Slewing Portal Dockside Crane

Erecting the crane



GANZ DANUBIUS
TRADING Co. Ltd.

15/12 t x 17/21 m Level-Luffing Slewing Portal Dockside Crane

Erecting the crane



15/12 t x 17/21 m Level-Luffing Slewing Portal Dockside Crane

Erecting the crane



15/12 t x 17/21 m Level-Luffing Slewing Portal Dockside Crane

Test and trials





15/12 t x 17/21 m Level-Luffing Slewing Portal Dockside Crane



GANZ

The logo features the word "GANZ" in a bold, serif font. The letter "A" is stylized to incorporate a silhouette of a crane. A horizontal line is positioned below the text.

for Port Said Shipyard (Egypt)
2017

Thank you for your attention!

www.ganztrading.hu

GANZ DANUBIUS
TRADING Co. Ltd.